



Lørenskog
Hageby

VEDLEGG SHEFTE



Lørenskog Hageby

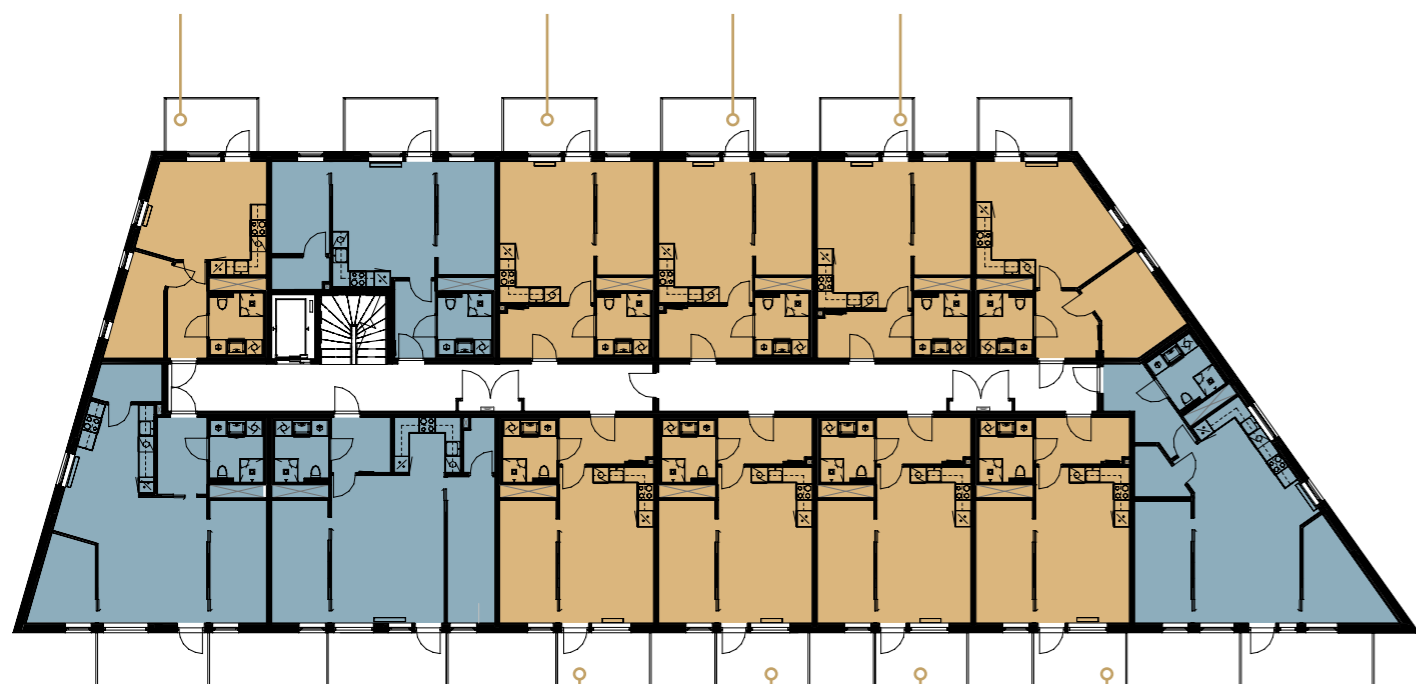
ETASJEPLANER OG PLANTEGNINGER BYGG B




Bygg B plan 5-6

BL05-13
BL06-13
BRA: 38,1 m²

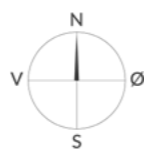
BL05-02
BL06-02 BL06-03 BL06-04
BRA: 43,4 m² BRA: 43,4 m² BRA: 43,4 m²



L06-10 L06-09 L06-08 L06-07
BRA: 45,4 m² BRA: 45,4 m² BRA: 45,4 m² BRA: 45,4 m²

 2-roms leilighet

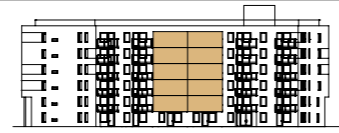
 3-roms leilighet



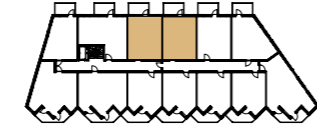
BYGG B, ETASJE 5 OG 6

2-ROMS LEILIGHET

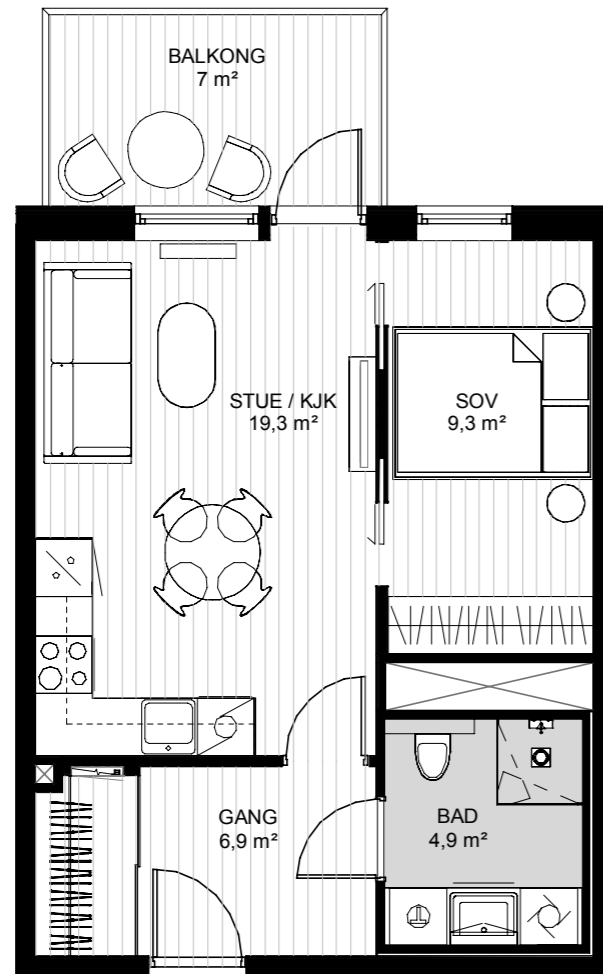
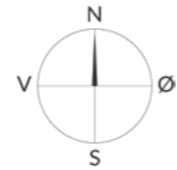
LEILIGHETSNR: BL05-02, BL06-02, BL06-03



Fasade Nord



Bygg B 2. etasje

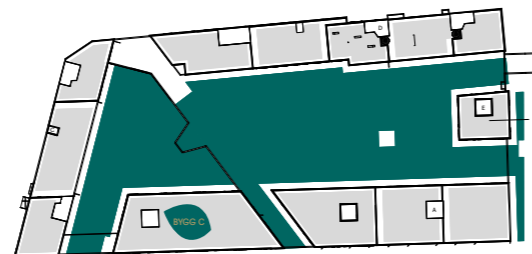


43,4 m² BRA

43,4 m² P-ROM

1 sov

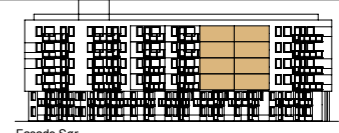
Balkong 7 m²



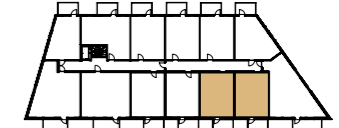
BYGG B, ETASJE 6

2-ROMS LEILIGHET

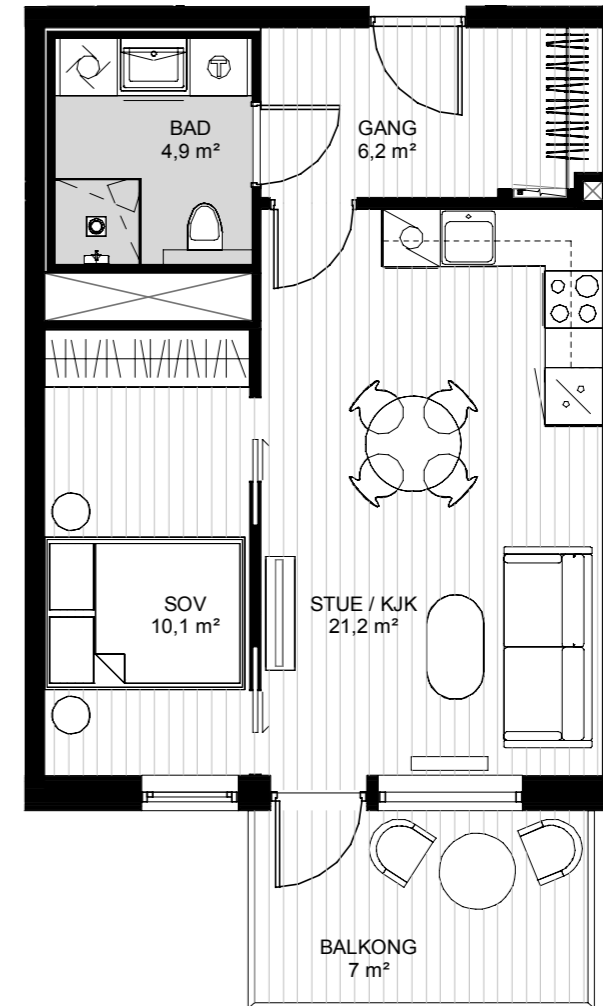
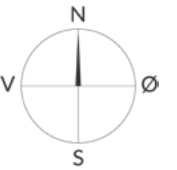
LEILIGHETSNR: BL06-07, BL06-08



Fasade Sør



Bygg B 3. etasje



45,4 m² BRA

45,4 m² P-ROM

1 sov

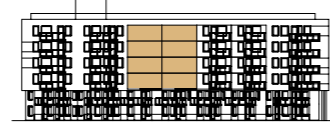
Balkong 7 m²



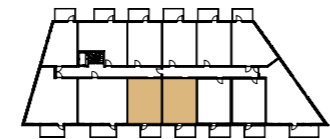
BYGG B, ETASJE 5 OG 6

2-ROMS LEILIGHET

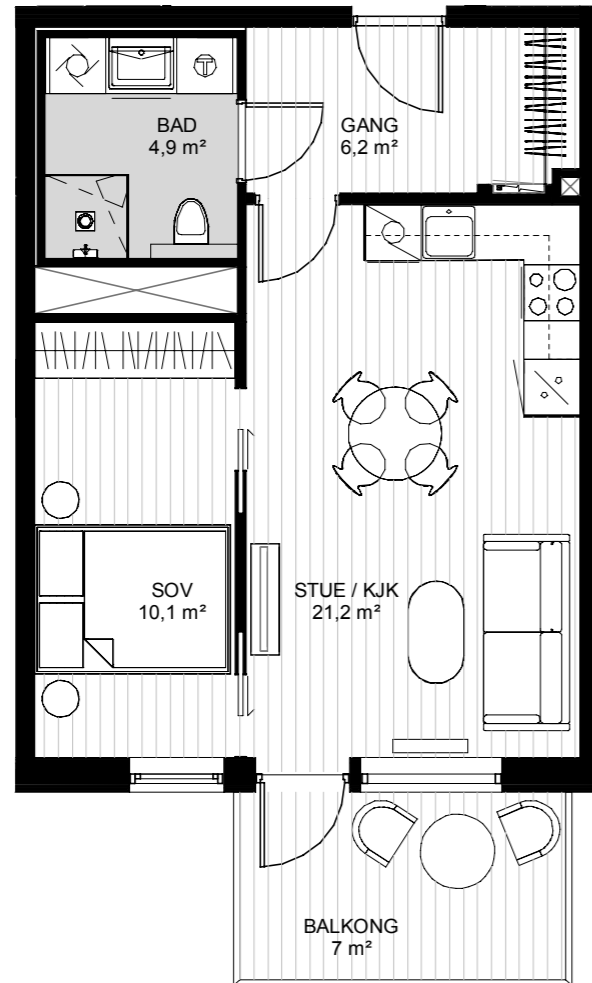
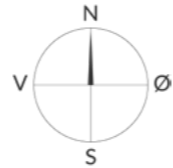
LEILIGHETSNR: BL06-09, BL05-10



Fasade Sør



Bygg B 3. etasje

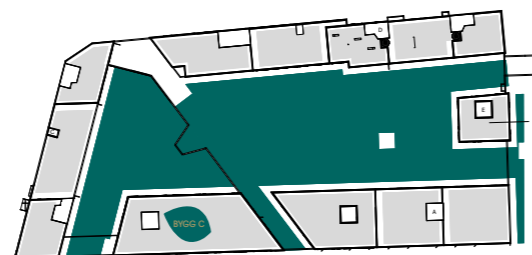


45,4 m² BRA

45,4 m² P-ROM

1 sov

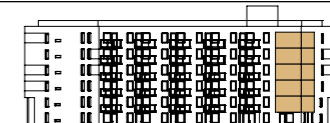
Balkong 7 m²



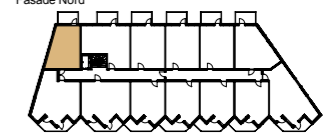
BYGG B, ETASJE 5 OG 6

2-ROMS LEILIGHET

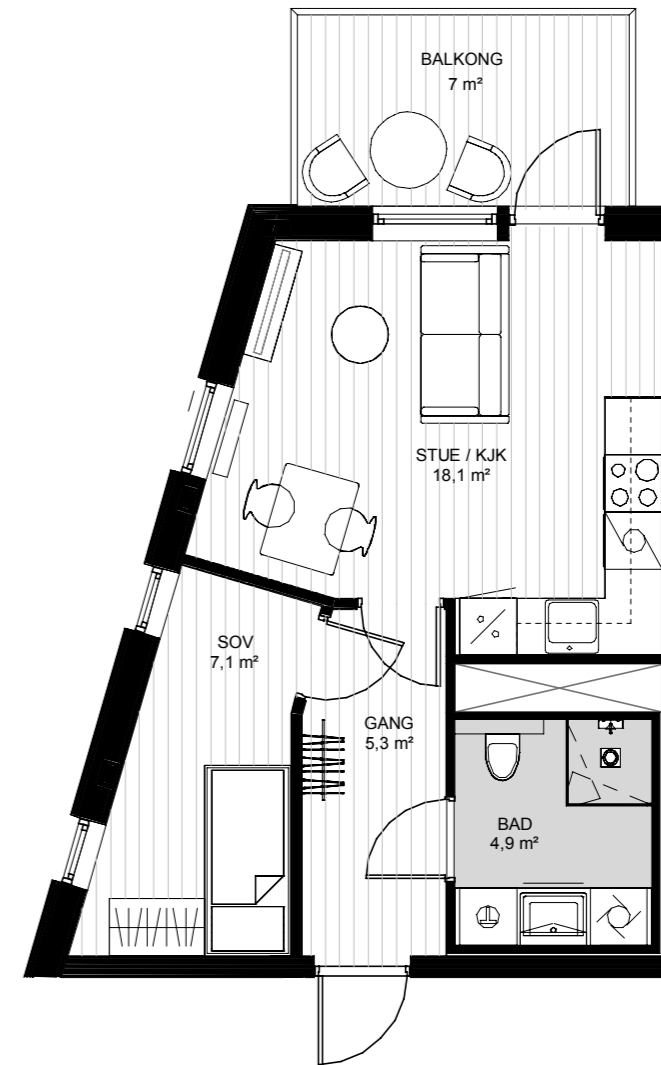
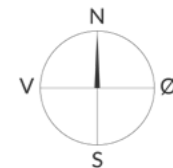
LEILIGHETSNR: BL05-13, BL06-13



Fasade Nord



Bygg B 2. etasje

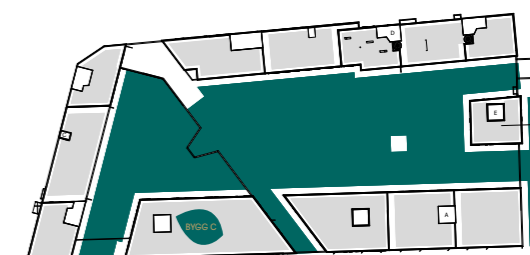


38,1 m² BRA

38,1 m² P-ROM

1 sov

Balkong 7 m²



Lørenskog Hageby

ETASJEPLANER OG PLANTEGNINGER BYGG C1



Bygg C1 plan 1

Bygg C1 plan 2

C1L01-02
BRA: 77,6 m²



C1L01-04
BRA: 79,5 m²

1-roms
leilighet

2-roms
leilighet

3-roms
leilighet

4-roms
leilighet



C1L02-02
BRA: 77,6 m²



C1L02-03
BRA: 56,4 m²

C1L02-01
BRA: 59,2 m²

C1L02-04
BRA: 79,5 m²

1-roms
leilighet

2-roms
leilighet

3-roms
leilighet

4-roms
leilighet



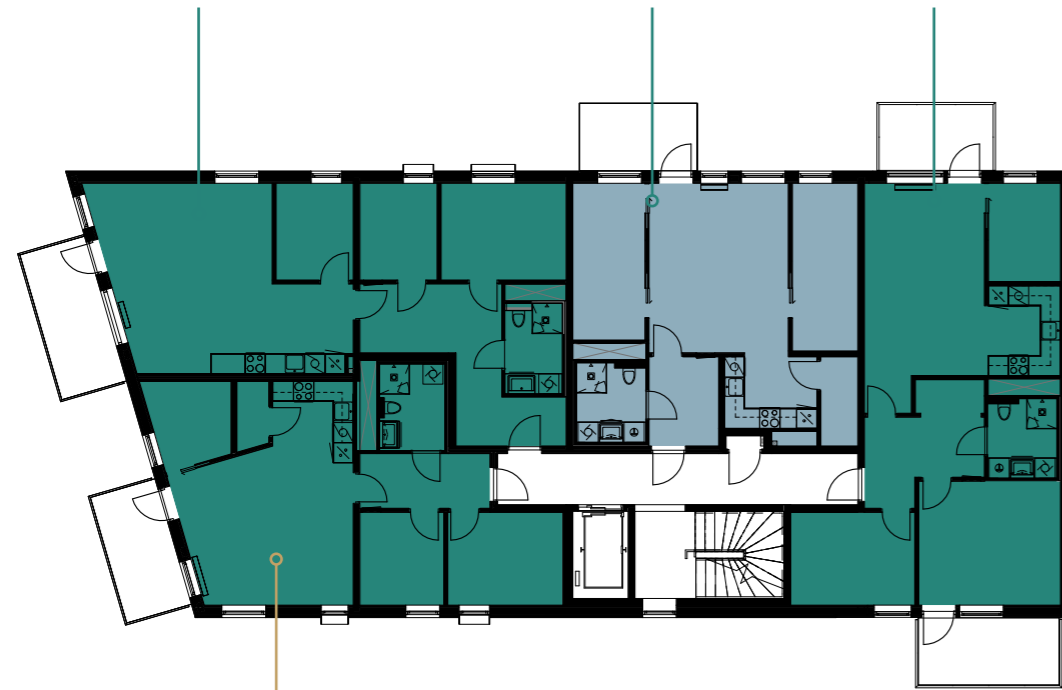
Bygg C1 plan 3 - 5

Bygg C1 plan 6

C1L03-02
CL104-02
C1L05-02
BRA: 82,3 m²

C1L04-03
BRA: 65,3 m²

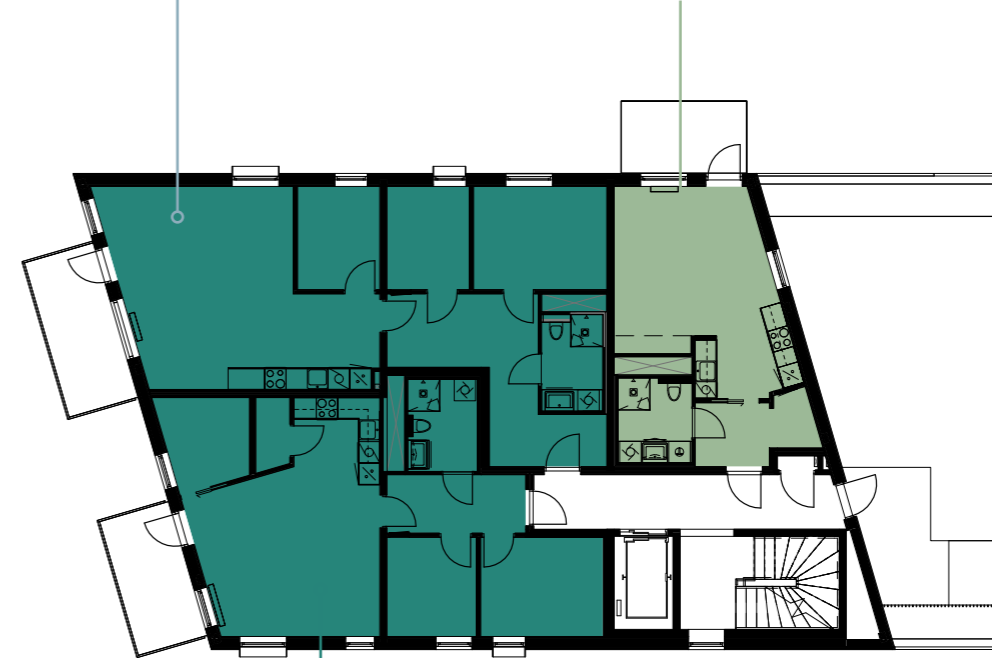
C1L03-04
C1L04-04
C1L05-04
BRA: 79,5 m²



C1L04-01
C1L05-01
BRA: 67,9 m²

C1L06-02
BRA: 82,3 m²

C1L06-03
BRA: 36,7 m²



C1L06-01
BRA: 67,9 m²

1-roms
leilighet

2-roms
leilighet

3-roms
leilighet

4-roms
leilighet

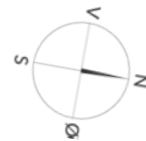


1-roms
leilighet

2-roms
leilighet

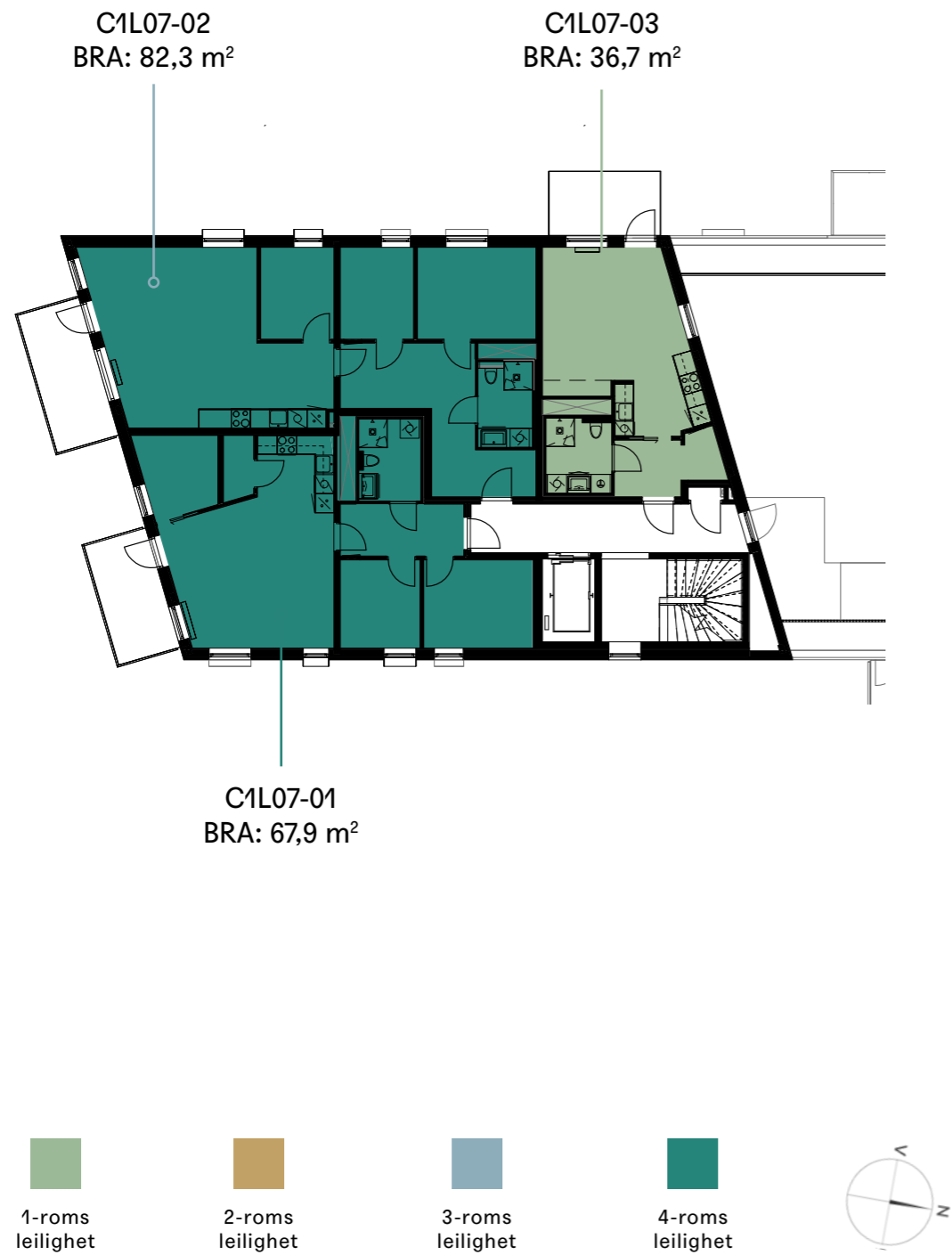
3-roms
leilighet

4-roms
leilighet



Bygg C1 plan 7

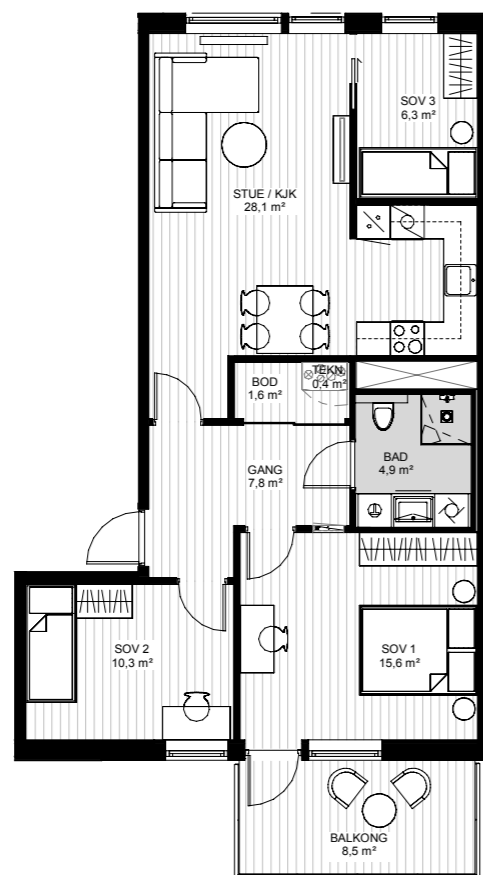
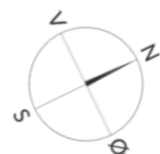
Lørenskog Hageby



BYGG C, ETASJE 2

4-ROMS LEILIGHET

LEILIGHETSNR: C1L02-04



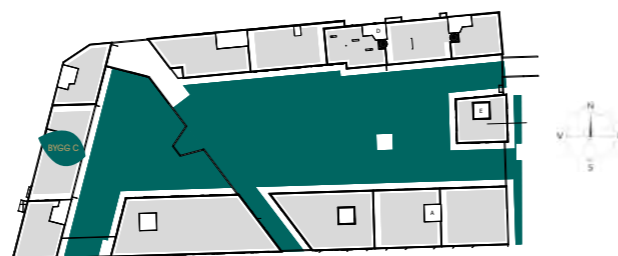
*Parkett/tretremmer på salgstegninger er av illustrativ karakter og er ikke førende for leggeretning av parkett/tremmegulv.

79,5 m² BRA

76,7 m² P-ROM

3 sov

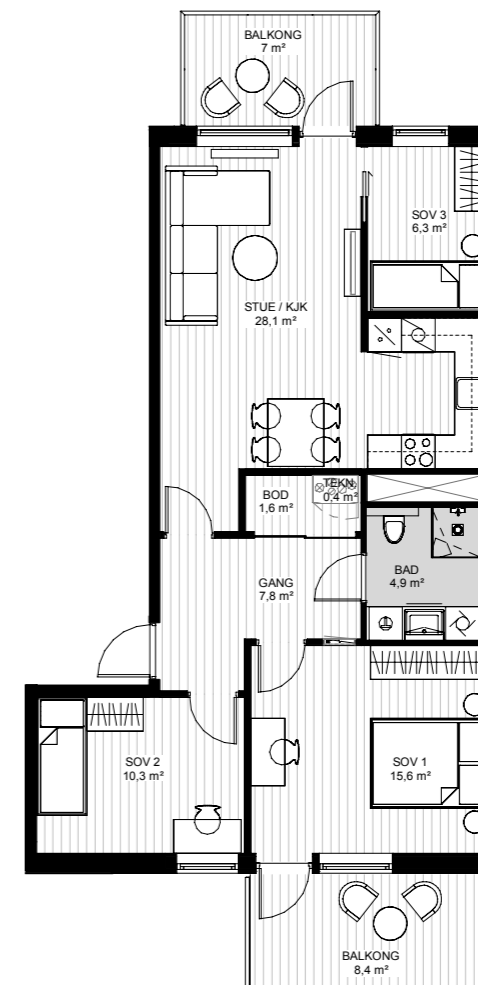
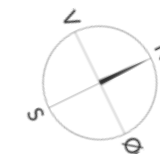
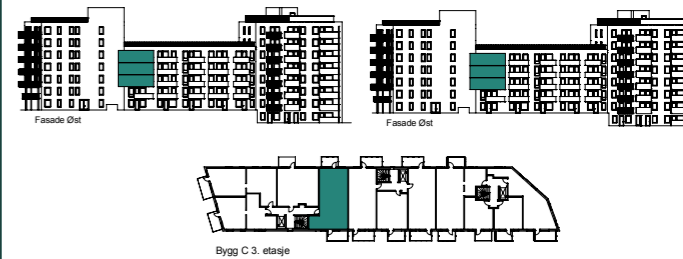
Balkong 8,5 m²



BYGG C, ETASJE 3, 4 OG 5

4-ROMS LEILIGHET

LEILIGHETSNR: C1L03-04, C1L04-04, C1L05-04



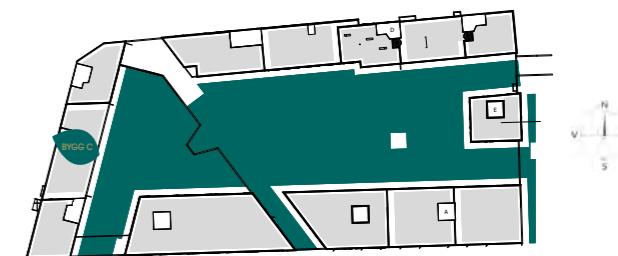
*Parkett/tretremmer på salgstegninger er av illustrativ karakter og er ikke førende for leggeretning av parkett/tremmegulv.

79,5 m² BRA

76,7 m² P-ROM

3 sov

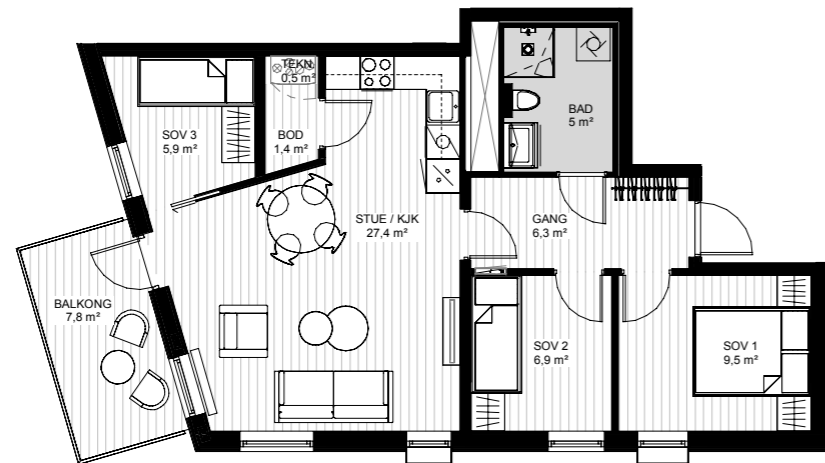
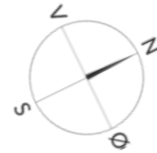
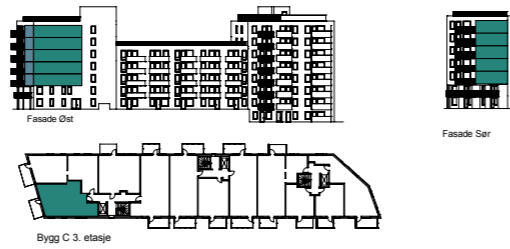
Balkong 7 + 8,4 m²



BYGG C, ETASJE 4, 5, 6 OG 7

4-ROMS LEILIGHET

LEILIGHETSNR: C1L04-01, C1L05-01, C1L06-01, C1L07-01



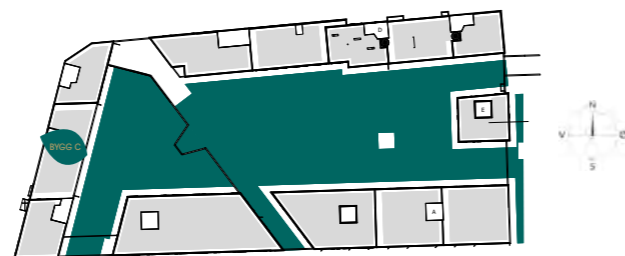
*Parkett/tretremmer på salgstegninger er av illustrativ karakter og er ikke førende for leggeretning av parkett/tremmegulv.

67,9 m² BRA

65,2 m² P-ROM

3 sov

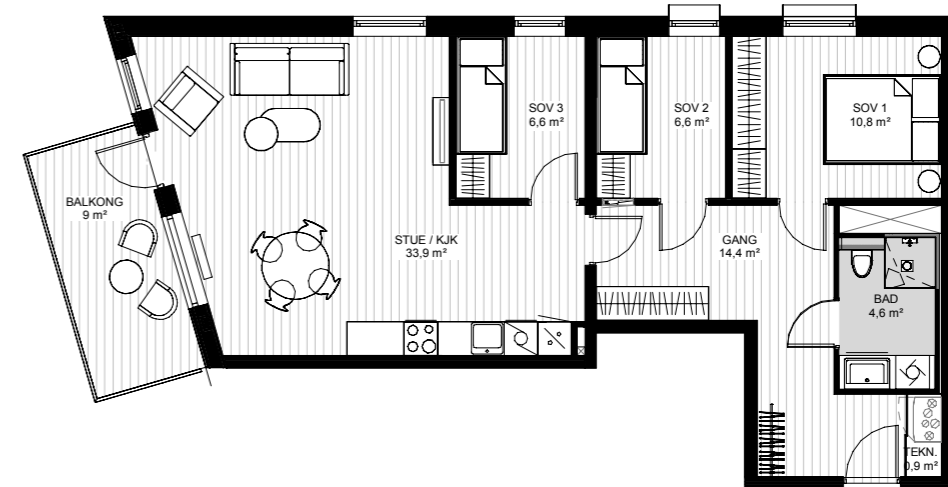
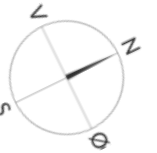
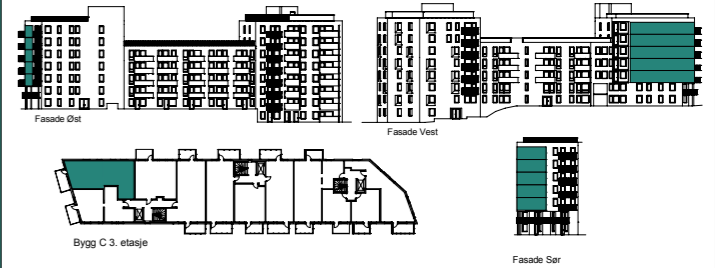
Balkong 7,8 m²



BYGG C, ETASJE 3, 4, 5, 6 OG 7

4-ROMS LEILIGHET

LEILIGHETSNR: C1L03-02, C1L04-02, C1L05-02, C1L06-02, C1L07-02



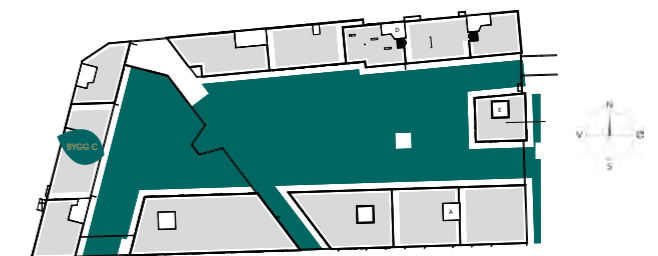
*Parkett/tretremmer på salgstegninger er av illustrativ karakter og er ikke førende for leggeretning av parkett/tremmegulv.

82,3 m² BRA

81,3 m² P-ROM

3 sov

Balkong 9 m²



Lørenskog Hageby

ETASJEPLAN OG PLANTEGNING BYGG D



Bygg D1 Plan 1

Bygg D1 Plan 2-8

Lørenskog Hageby



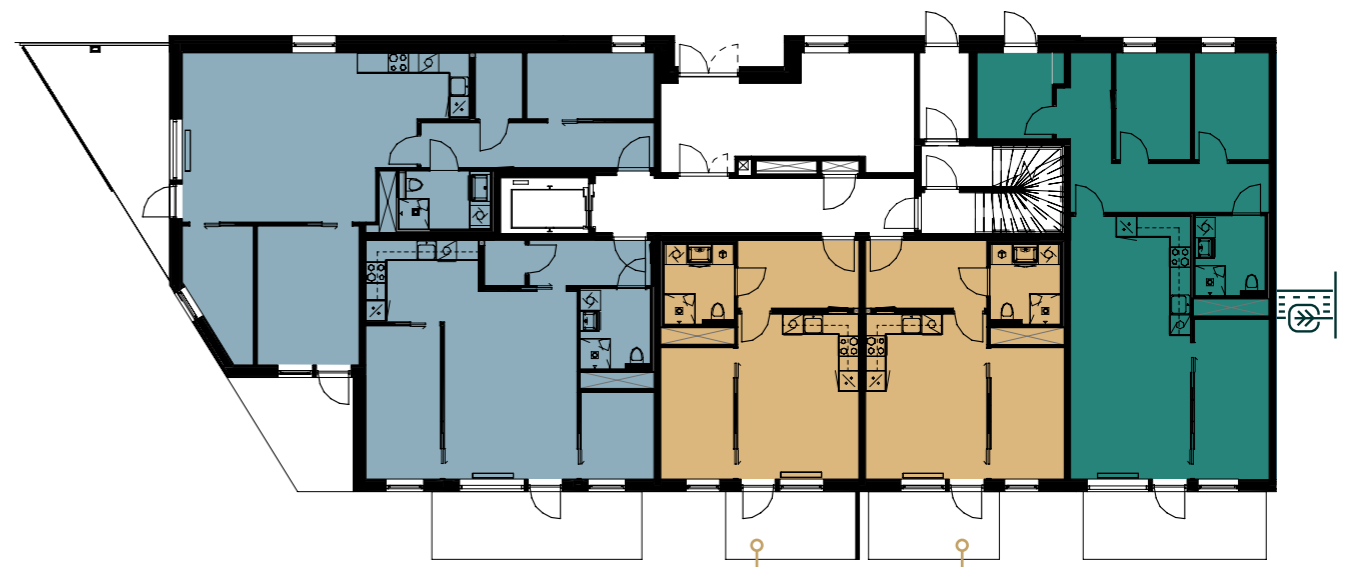
D1L01-03
BRA: 40,7 m²

D1L01-02
BRA: 40,7 m²

2-roms
leilighet

3-roms
leilighet

4-roms
leilighet



D1L02-03
D1L03-03
D1L04-03
D1L05-03
D1L06-03
D1L07-03
D1L08-03
BRA: 40,7 m²

D1L02-02
D1L04-02
D1L05-02
D1L06-02
D1L07-02
D1L08-02
BRA: 40,7 m²

2-roms
leilighet

3-roms
leilighet

4-roms
leilighet



Bygg D1 Plan 9

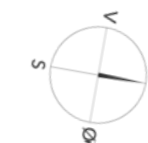
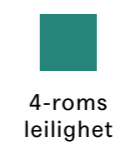
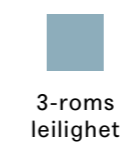
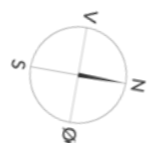
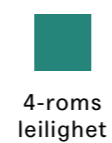
Bygg D1 Plan 10



D1L09-02 D1L09-01
BRA: 40,7 m² BRA: 40,7 m²



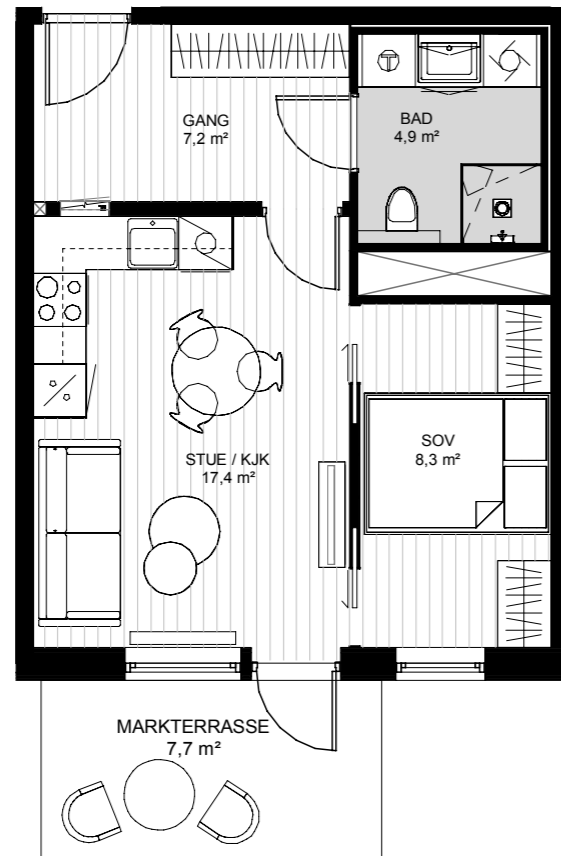
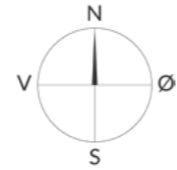
D1L10-02 D1L10-01
BRA: 40,7 m² BRA: 40,7 m²



BYGG D, ETASJE 1

2-ROMS LEILIGHET

LEILIGHETSNR: D1L01-02



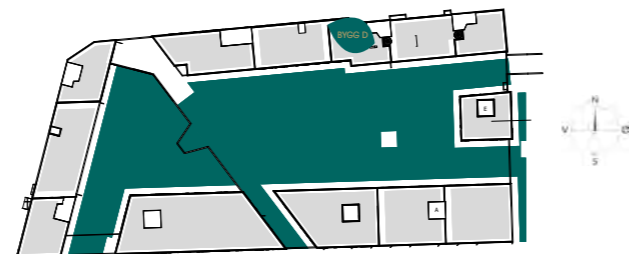
*Parkett/tretremmer på salgstegninger er av illustrativ karakter og er ikke førende for leggeretning av parkett/tremmegulv.

40,7 m² BRA

40,7 m² P-ROM

1 sov

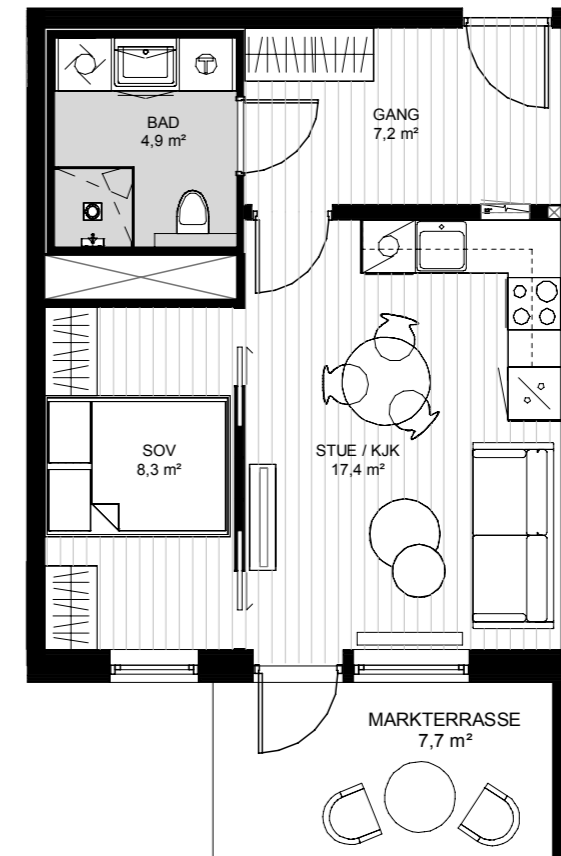
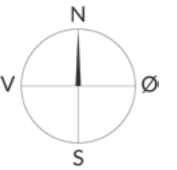
Markterrasse 7,7 m²



BYGG D, ETASJE 1

2-ROMS LEILIGHET

LEILIGHETSNR: D1L01-03



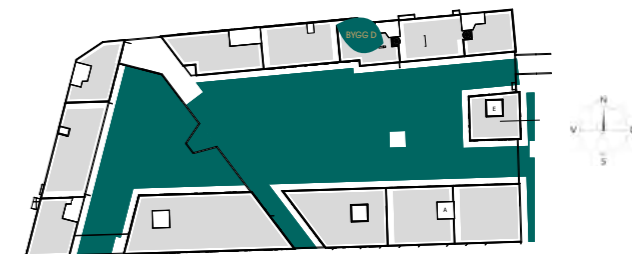
*Parkett/tretremmer på salgstegninger er av illustrativ karakter og er ikke førende for leggeretning av parkett/tremmegulv.

40,7 m² BRA

40,7 m² P-ROM

1 sov

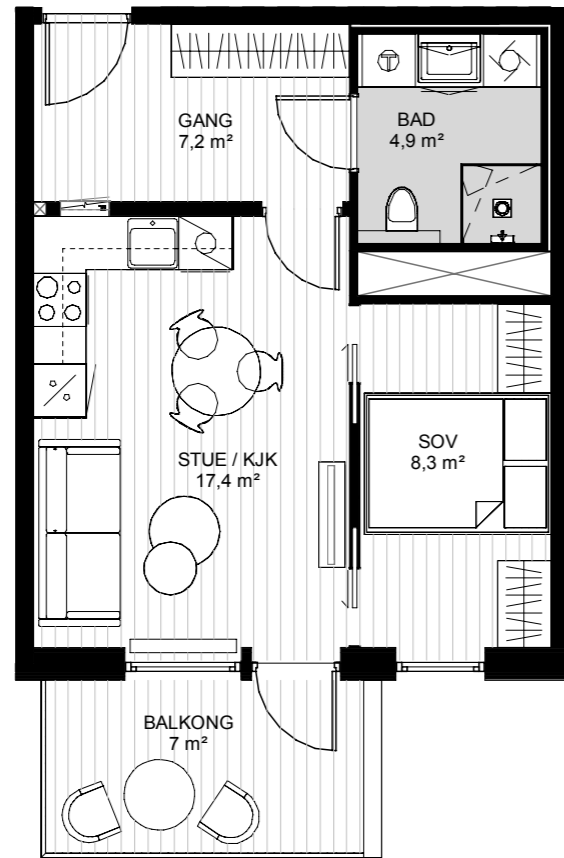
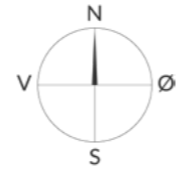
Markterrasse 7,7 m²



BYGG D, ETASJE 2, 4, 5, 7 OG 10

2-ROMS LEILIGHET

LEILIGHETSNR: D1L02-02, D1L04-02, D1L05-02,
D1L07-02, D1L10-01



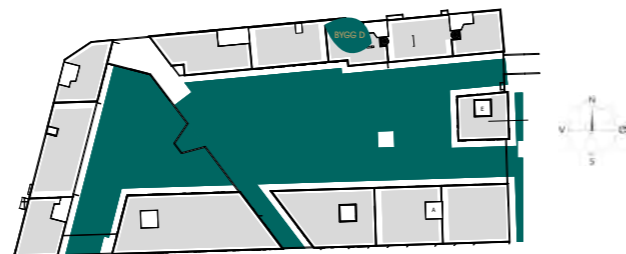
*Parkett/tretremmer på salgstegninger er av illustrativ karakter og er ikke førende for leggeretning av parkett/tremmegulv.

40,7 m² BRA

40,7 m² P-ROM

1 sov

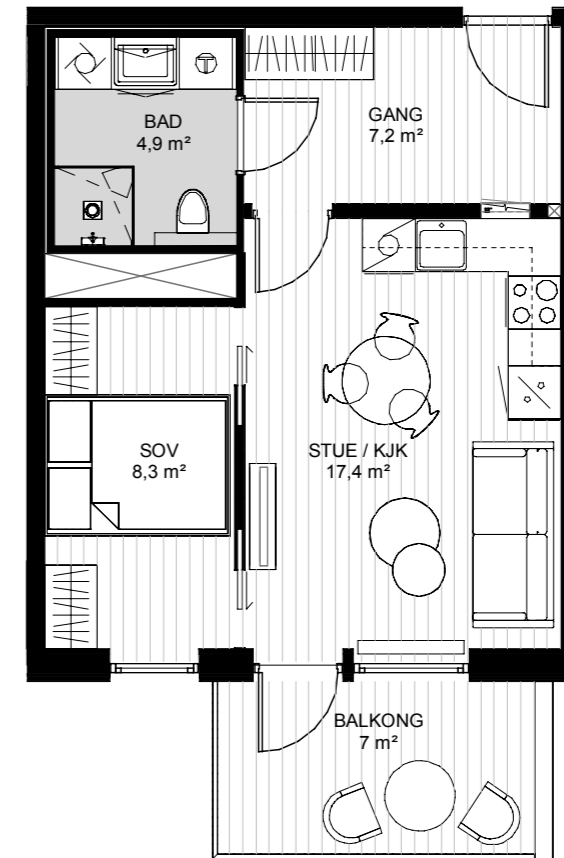
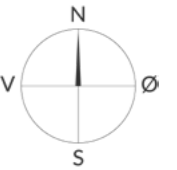
Balkong 7 m²



BYGG D, ETASJE 2, 4, 5, 7 OG 10

2-ROMS LEILIGHET

LEILIGHETSNR: D1L02-03, D1L04-03, D1L05-03,
D1L07-03, D1L10-02



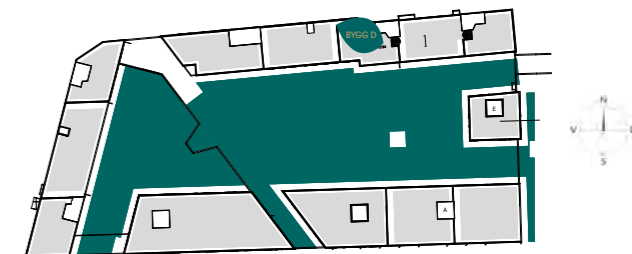
*Parkett/tretremmer på salgstegninger er av illustrativ karakter og er ikke førende for leggeretning av parkett/tremmegulv.

40,7 m² BRA

40,7 m² P-ROM

1 sov

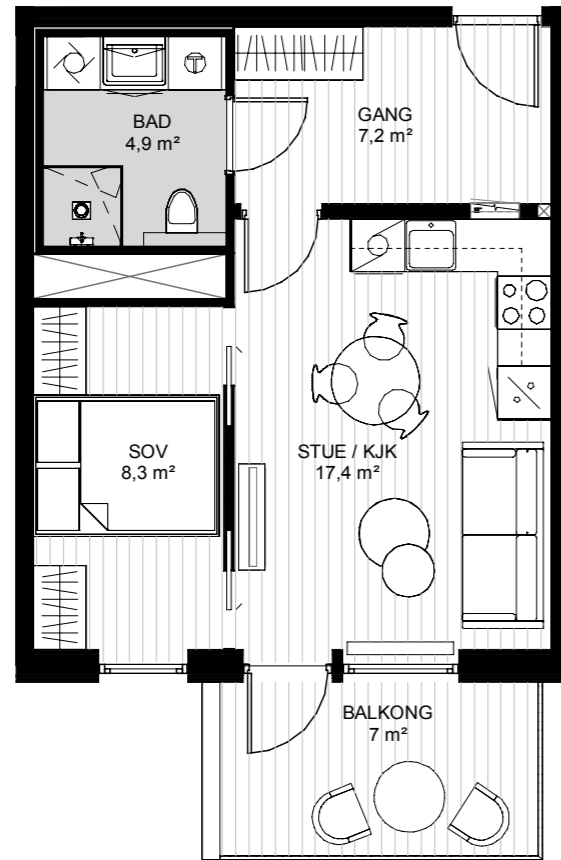
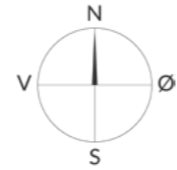
Balkong 7 m²



BYGG D, ETASJE 3, 6, 8 OG 9

2-ROMS LEILIGHET

LEILIGHETSNR: D1L03-03, D1L06-03, D1L08-03,
D1L09-02



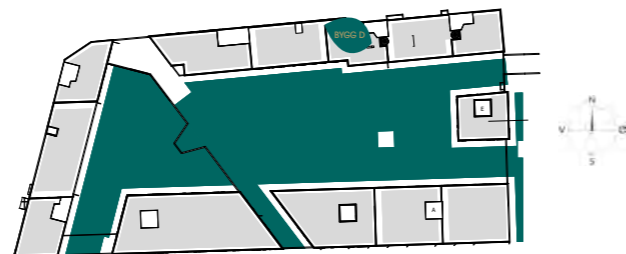
*Parkett/tretremmer på salgstegninger er av illustrativ karakter og er ikke førende for leggeretning av parkett/tremmegulv.

40,7 m² BRA

40,7 m² P-ROM

1 sov

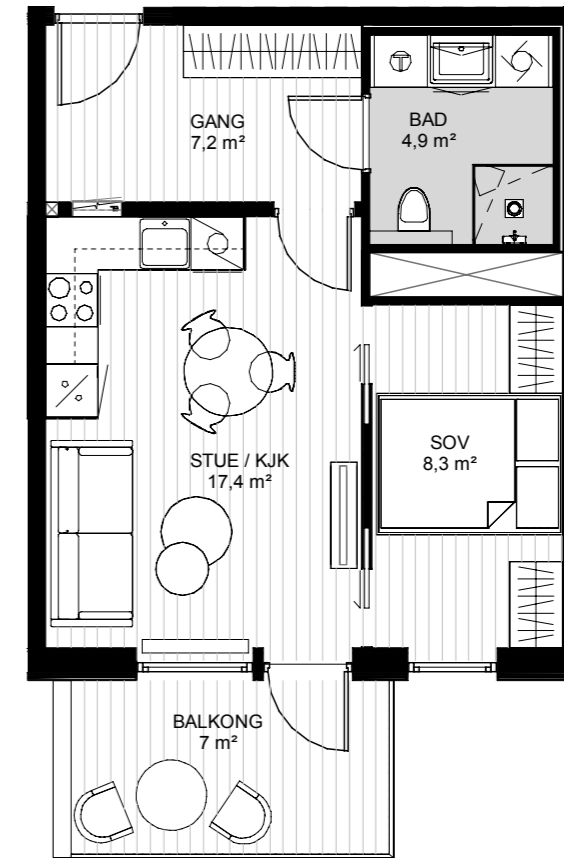
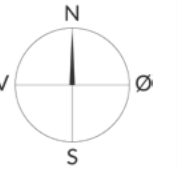
Balkong 7 m²



BYGG D, ETASJE 6, 8 OG 9

2-ROMS LEILIGHET

LEILIGHETSNR: D1L06-02, D1L08-02, D1L09-01



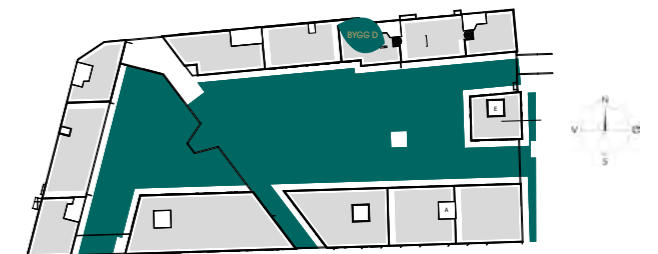
*Parkett/tretremmer på salgstegninger er av illustrativ karakter og er ikke førende for leggeretning av parkett/tremmegulv.

40,7 m² BRA

40,7 m² P-ROM

1 sov

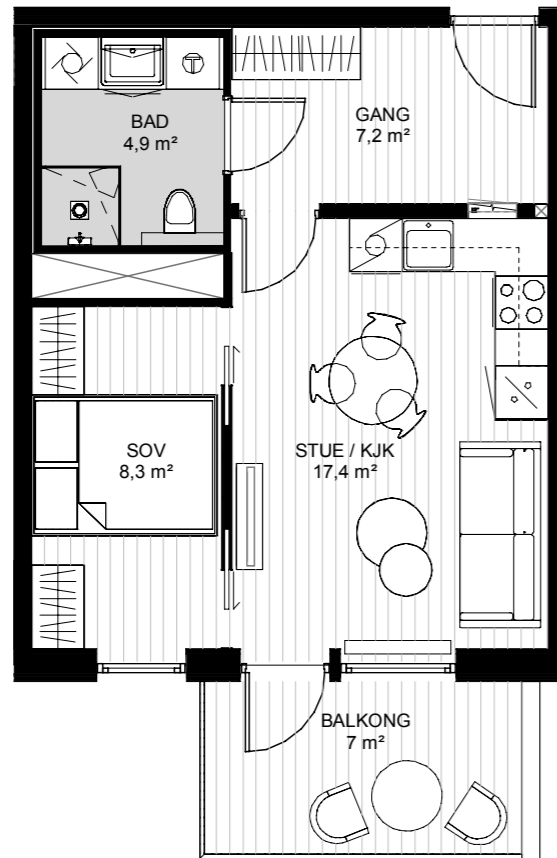
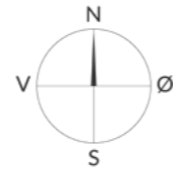
Balkong 7 m²



BYGG D, ETASJE 2, 4, 5 OG 7

2-ROMS LEILIGHET

LEILIGHETSNR: D1L02-03, D1L04-03, D1L05-03, D1L07-03



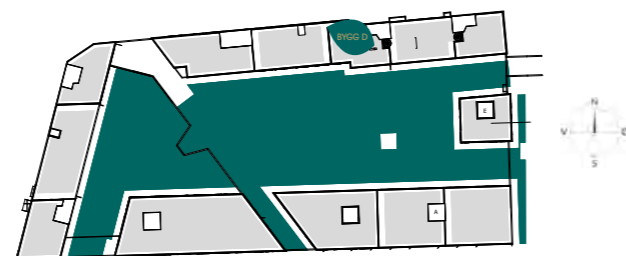
*Parkett/trememmer på salgstegninger er av illustrativ karakter og er ikke førende for leggeretning av parkett/tremmegulv.

40,7 m² BRA

40,7 m² P-ROM

1 sov

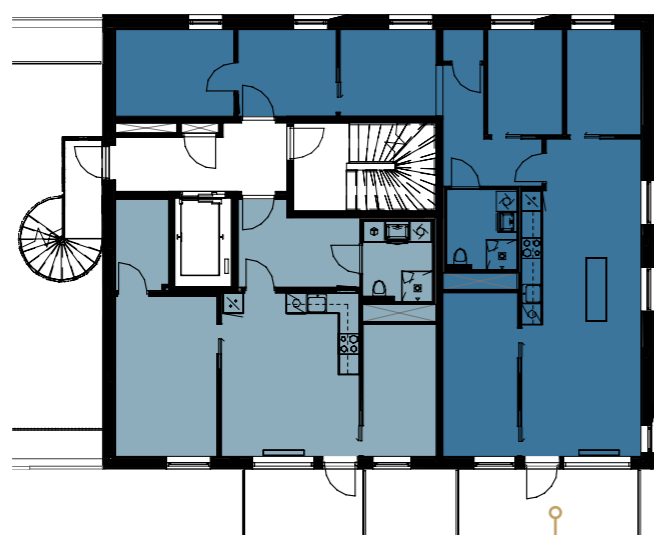
Balkong 7 m²



BYGG C



Bygg D4 plan 10



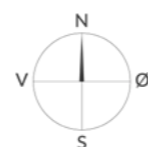
D4L10-01
BRA: 98 m²

2-roms leilighet

3-roms leilighet

4-roms leilighet

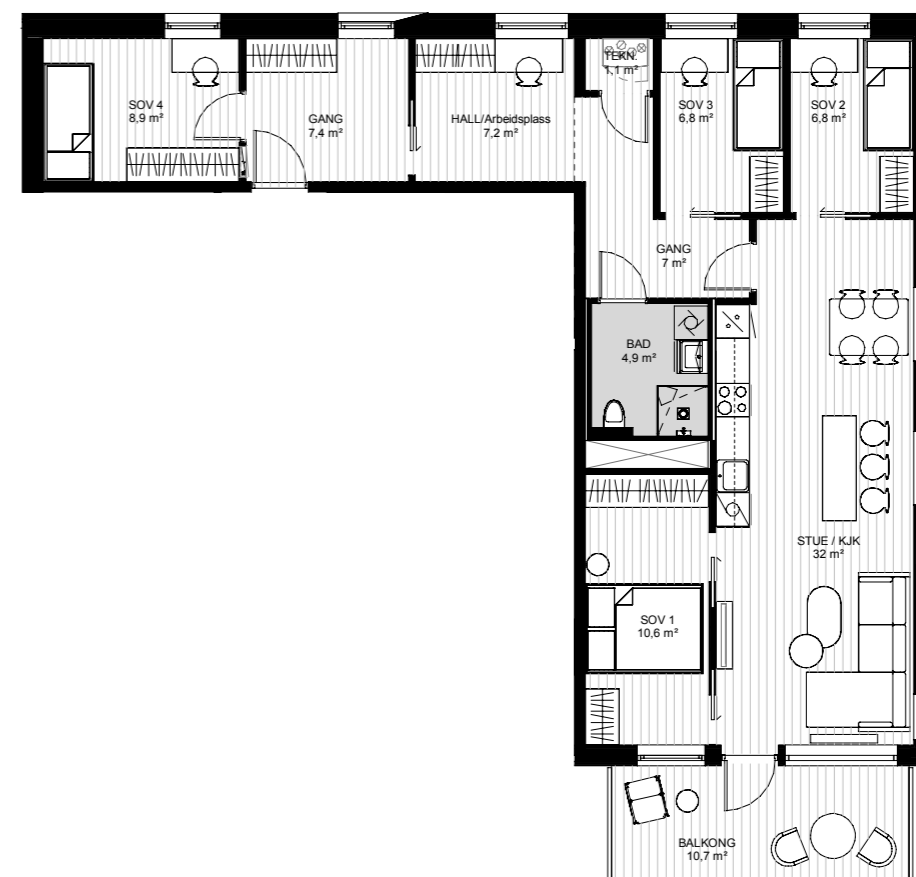
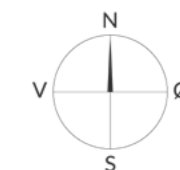
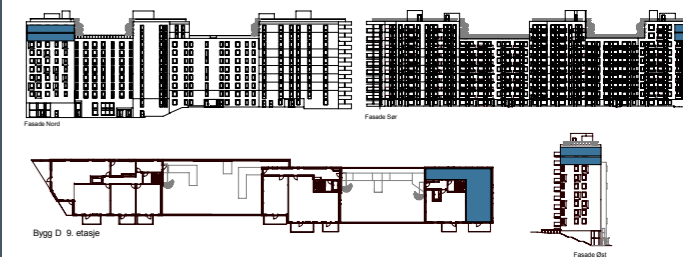
5-roms leilighet



BYGG D, ETASJE 4

3-ROMS LEILIGHET

LEILIGHETSNR: C1L04-03



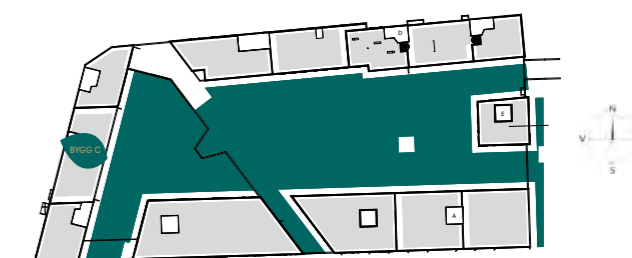
*Parkett/tretremer på salgstegninger er av illustrativ karakter og er ikke førende for leggeretning av parkett/tremmegulv.

98 m² BRA

96,4 m² P-ROM

4 sov

Balkong 10,7 m²



KONTAKT MEGLER

TOM Z. BLIKSMARK

Eiendomsmegler

90 92 59 04

tzb@sem-johnsen.no

LENE MARKEGÅRD

Eiendomsmegler

91 82 39 23

lhm@sem-johnsen.no



Lørenskog
Hageby



fredensborgbolig.no/hageby